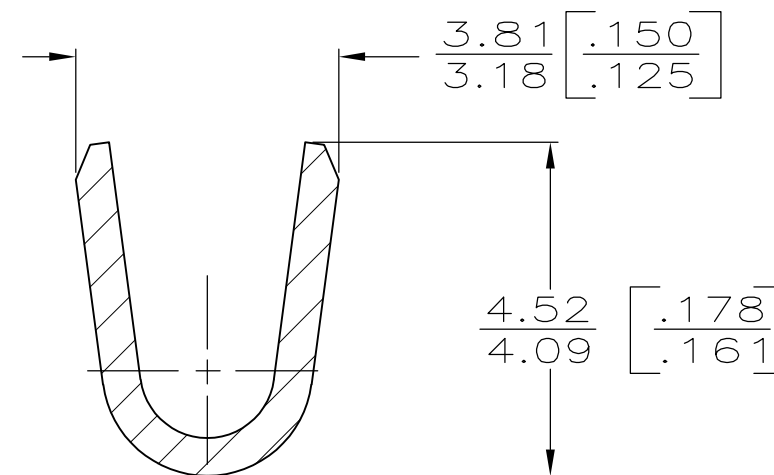
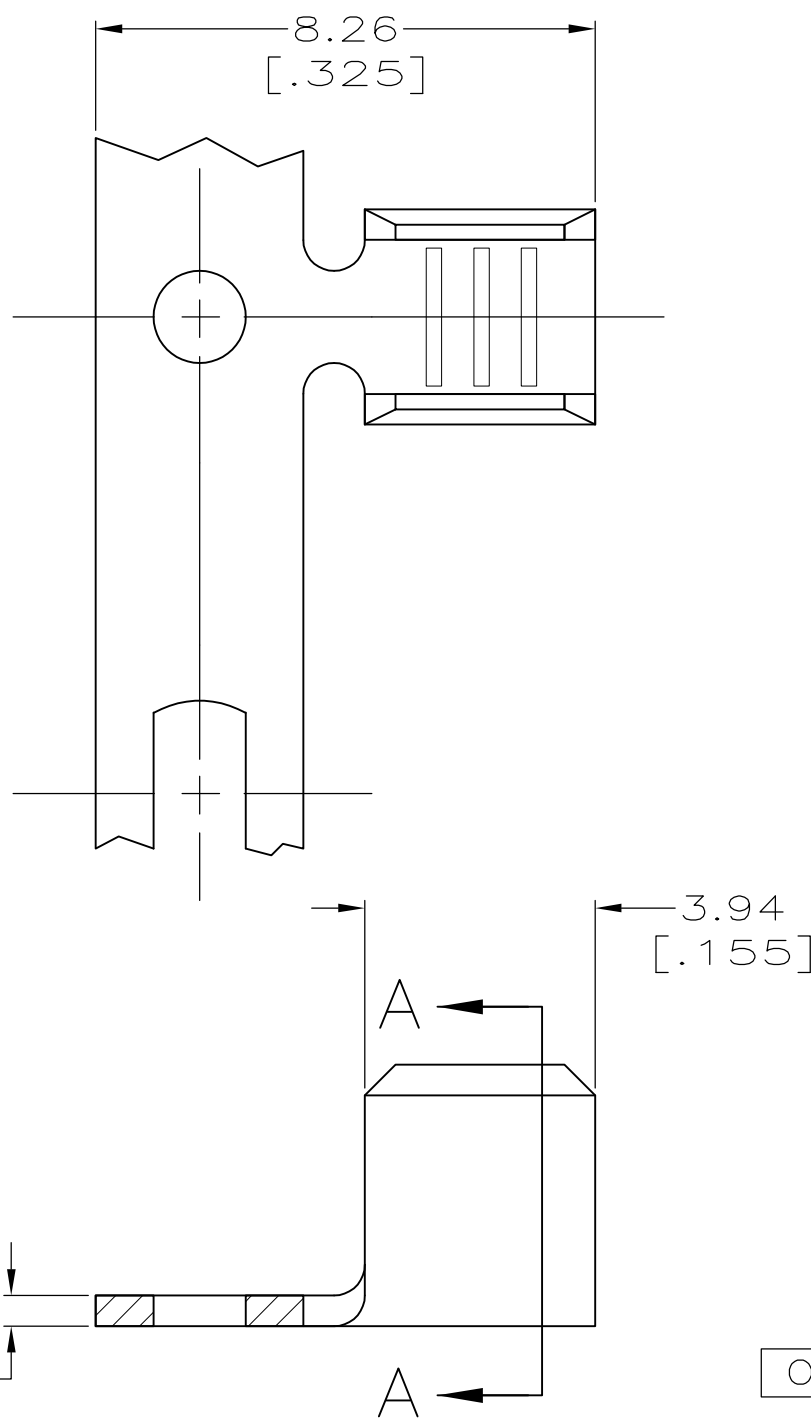


THIS DRAWING IS UNPUBLISHED. RELEASED FOR PUBLICATION

© COPYRIGHT BY TYCO ELECTRONICS CORPORATION. ALL RIGHTS RESERVED.

LOC	DIST	REVISIONS					
AF	50	P	LTR	DESCRIPTION	DATE	DWN	APVD
			K2	REVISED PER ECR-07-015145	27JUN07	HMR	GP

- 1 CONTINUOUS STRIP ON REEL.
- 2 0.002032 [.000080] MIN TIN PLATE
- 3 CRIMP WIDTH, .110 F TYPE
CRIMP HEIGHT (±.002) = (TOTAL CMA + 11,300) / 176,700
- 4 PRELIMINARY - NOT FOR PRODUCTION.
- 5 WIRE RANGE FOR NEW APPLICATIONS: 1500-5000 CMA
(WIRE RANGE APPROVED FOR APPLICATIONS IMPLEMENTED PRIOR TO 2005: 1970-4940 CMA).



SECTION A-A
SCALE 10:1

1010 STEEL	NICKEL	REVERSE	-	4	63130-8
H02 COPPER-NICKEL	NONE			4	63130-7
H02 PHOS BRONZE	2			5	63130-4
082 BRASS	NONE	STANDARD	-	3	63130-2
OBSOLETE					63130-1
MATERIAL	FINISH	REELING	WIRE RANGE	PART NUMBER	

THIS DRAWING IS A CONTROLLED DOCUMENT.		DWN 17/JAN/96 PHILLIP M FORTNEY	Tyco Electronics Corporation Harrisburg, Pa 17105-3608		
DIMENSIONS: INCHES		CHK 17/JAN/96 JEFF R RUTH	NAME		
TOLERANCES UNLESS OTHERWISE SPECIFIED:		APVD 17/JAN/96 DENNIS SCHWENK	SPLICE		
0 PLC ± - 1 PLC ± - 2 PLC ± 0.25 [.010] 3 PLC ± - 4 PLC ± - ANGLES ± -		PRODUCT SPEC	SIZE	CAGE CODE	DRAWING NO
MATERIAL SEE TABLE		FINISH SEE TABLE	WEIGHT -	A300779	C-63130
CUSTOMER DRAWING			RESTRICTED TO	SCALE 8:1	SHEET 1 OF 1
				REV K2	